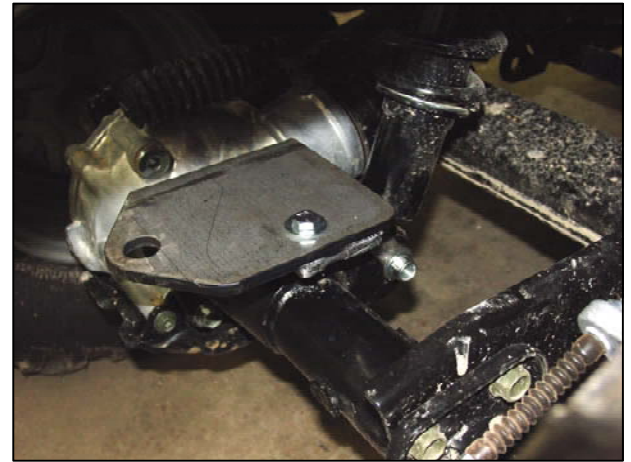
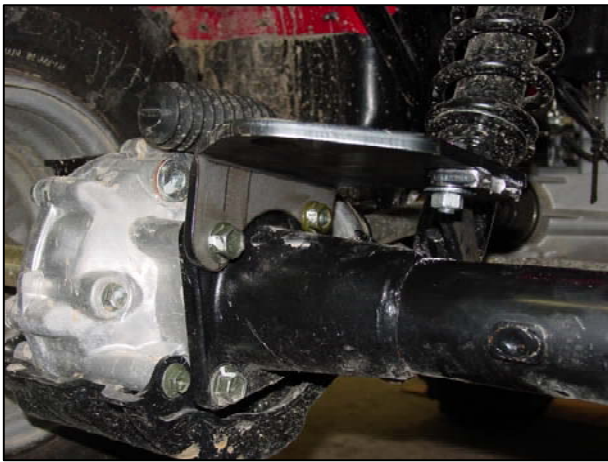


- 2=5/16 USS WASHERS-A
- 1=5/16X1 BOLT-B
- 1=5/16 LOCK NUTS-C
- 1=3/8X2 1/2 BOLT -D
- 2=3/8 FLAT WASHERS-E
- 1=3/8 LOCK NUT-F

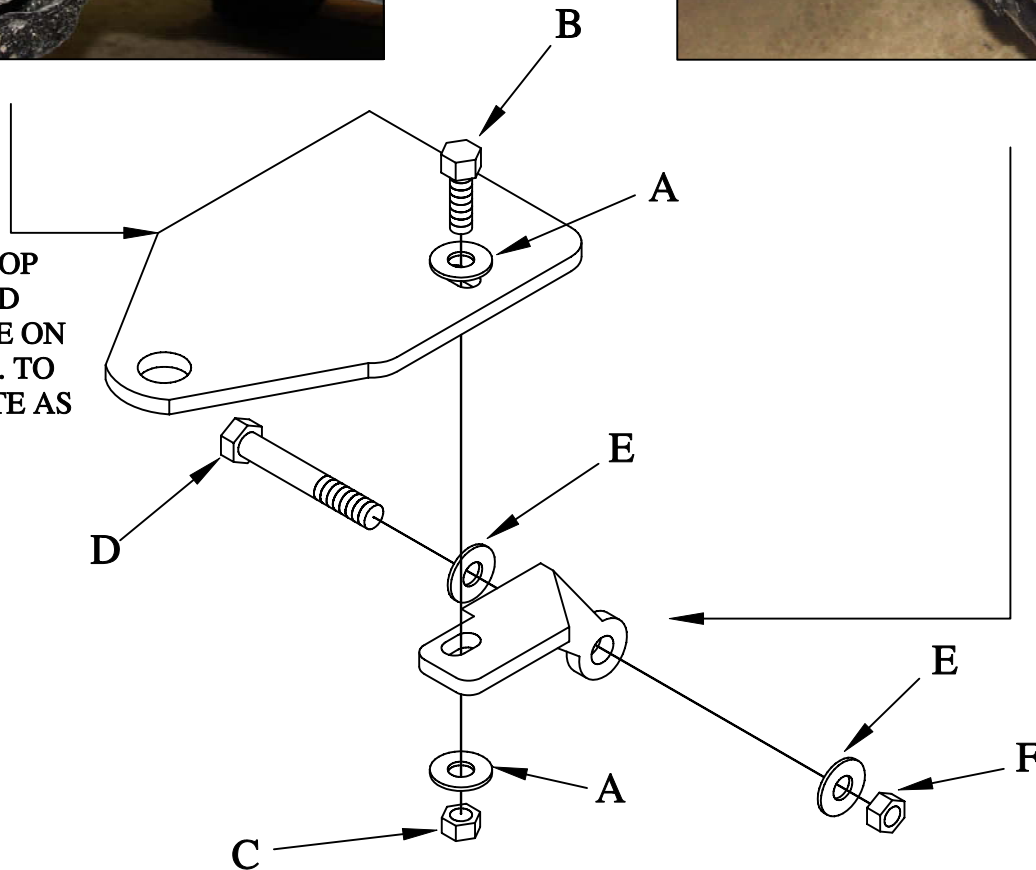


#1256

SUZUKI OZARK 250 2X4



REMOVE THE TOP STOCK NUT AND BOLT THAT ARE ON THE REAR DIFF. TO BOLT THE PLATE AS SHOWN IN THE PICTURE.



THIS BRACKET WILL BOLT TO THE BOTTOM SHOCK BRACKET USE THE 3/8X2 1/2 BOLTS ,WASHERS AND NUT.